

# WASHINGTON MIDDLE SCHOOL COMMUNITY INFORMATION MEETING

---

May 8, 2024

**LONG BEACH**  
UNIFIED • SCHOOL • DISTRICT  
*Excellence and Equity*

# WELCOME

---

**David Miranda**

Executive Director, Facilities Development & Planning  
Long Beach Unified School District



# LBUSD BOND PROGRAM

## **MEASURE E**

In November 2016, the Long Beach Unified School District approved Measure E, a \$1.5 billion bond for school repair and safety, which passed with 74.86% voter support. The measure is tightly regulated, with funds strictly allocated to neighborhood school improvements, subject to independent audits and oversight by a Citizens' Committee and prohibited from use on administrator salaries.

## **MEASURE Q**

Approved by local voters in November 2022, Measure Q is a \$1.7 billion bond aimed at improving health, safety, and student achievement. It will fund upgrades to plumbing, drinking water safety, and school accessibility and earthquake standards. Additionally, Measure Q will renovate libraries, labs, and career education spaces, and provide new athletic facilities. It also includes replacing air conditioning systems at aging campuses previously excluded under Measure E.

# PROGRAM GOALS & PRIORITIES

- Campuswide modernization of all school sites
  - HVAC system installation
  - Utility upgrades
  - Accessibility upgrades
  - Fire alarm upgrades
  - Intercom, clocks, speakers
  - Classroom technology
  - Ceiling repair
  - Interior lights
  - Interior & exterior painting
  - New windows as necessary
- LBUSD FMP priority categories
  - Health & Fitness (Field)
  - Media Centers
  - Outdoor Learning Space
  - Safe Campuses
  - Sustainability
  - Wellness & Green Space

# PROGRAM ACHIEVEMENTS

- Comprehensive renovations at 31 LBUSD schools, or more than one-third of all campuses districtwide
  - ✓ High-efficiency air conditioning systems
  - ✓ Technology and accessibility upgrades
  - ✓ Ceiling and roofing repairs
  - ✓ Other campus improvements (windows, paint, landscaping, etc.)



# WASHINGTON MS CAMPUS TRANSFORMATION

---

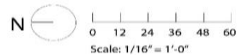
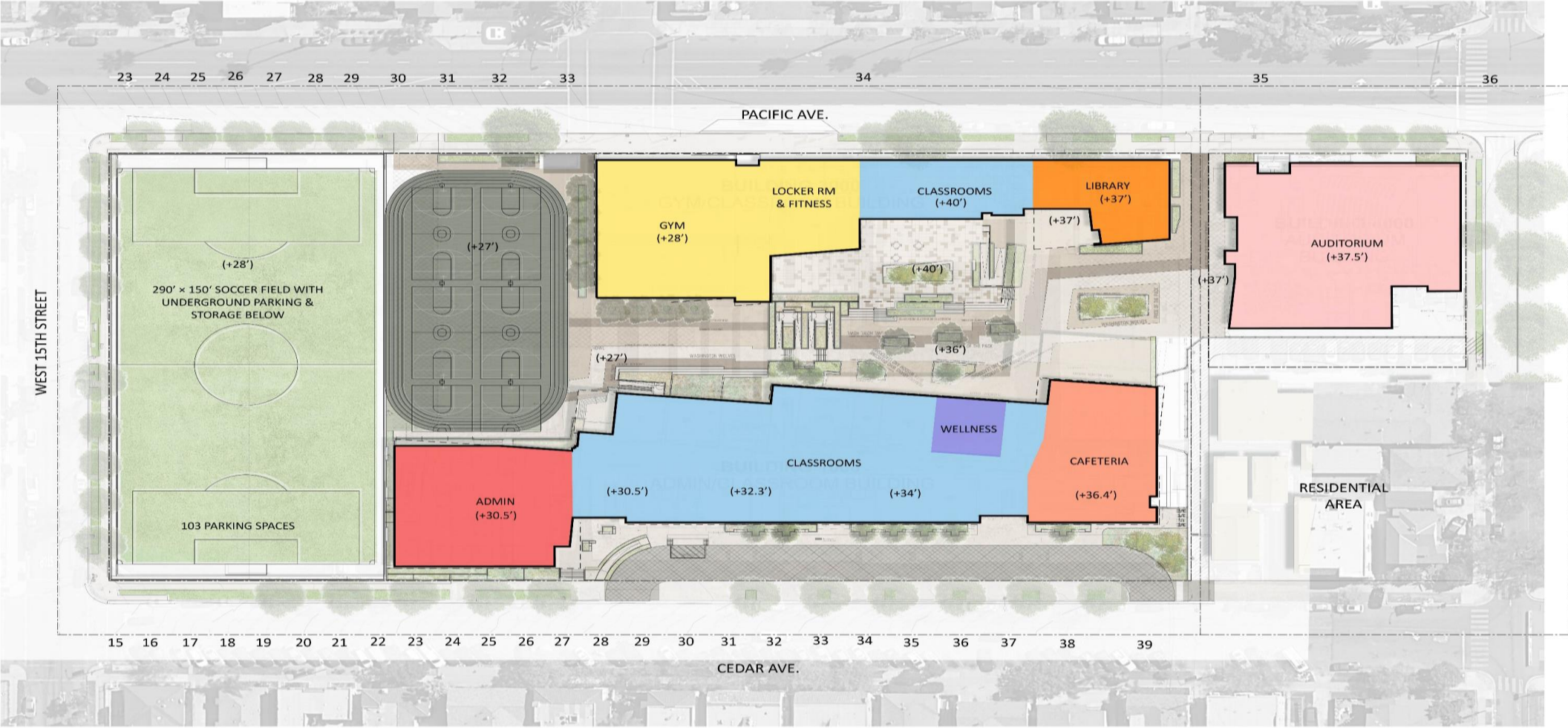
**Priscilla Garcia**  
Planning Project Manager  
Long Beach Unified School District



# PROJECT SCOPE

- Demolition
  - ✓ Administration Building
  - ✓ Auditorium
  - ✓ Gymnasium
  - ✓ Cafeteria
  - ✓ Science/shops building
- New Buildings
  - ✓ Administration / Classroom Buildings
  - ✓ Auditorium
  - ✓ Gymnasium
  - ✓ Cafeteria
  - ✓ Science / Robotics Building
- New Outdoor Facilities
  - ✓ Courtyard
  - ✓ All-weather field
- Additional
  - ✓ New media center
  - ✓ New wellness center
  - ✓ New underground parking lot

# WASHINGTON CAMPUS TRANSFORMATION – SITE PLAN



**LEGEND**

- Admin
- Gym
- Wellness
- Cafeteria
- Classroom
- Auditorium
- Project Boundary
- Drop-off Lane



# WASHINGTON CAMPUS TRANSFORMATION – CEDAR AVENUE



# WASHINGTON CAMPUS TRANSFORMATION – PACIFIC AVENUE

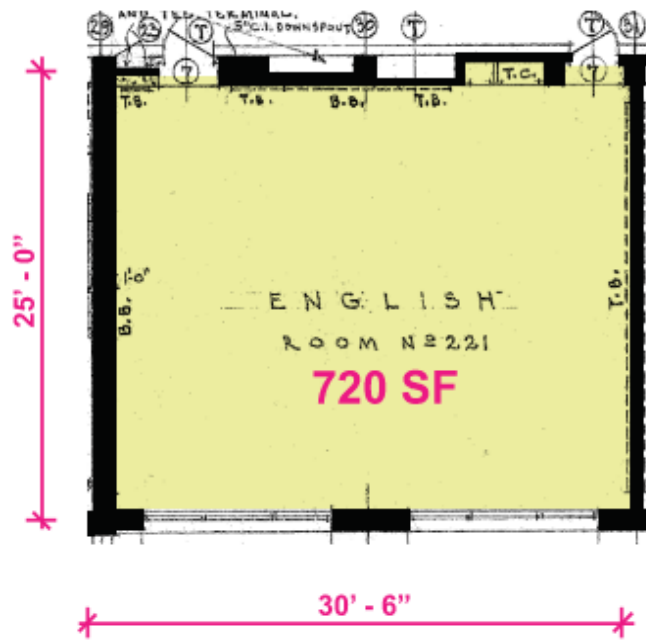


# STUDENT COMMONS/INTERIOR CIRCULATION

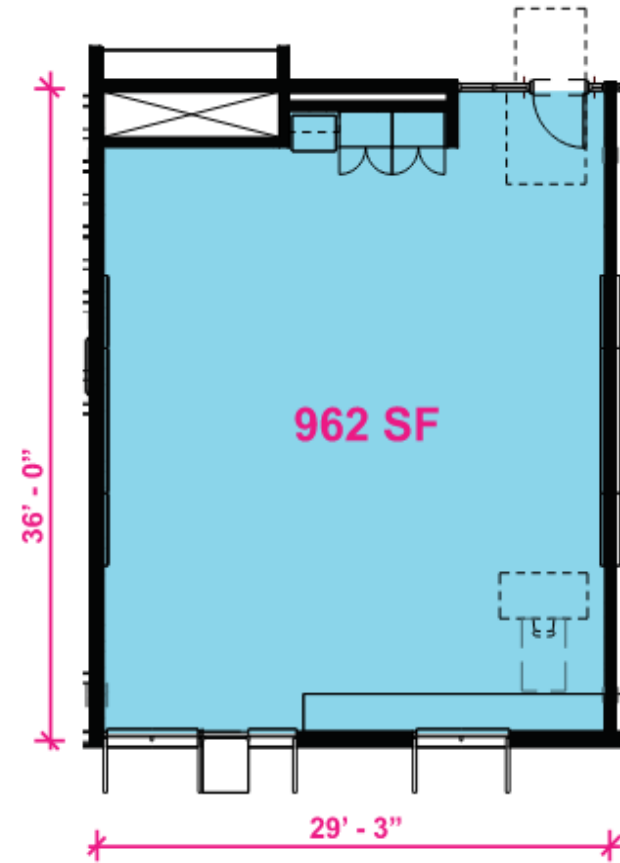


- ✓ Increase classroom spaces
- ✓ Robotics program
- ✓ Air conditioning
- ✓ New Lighting, A/V Technology, Markerboards, etc.

# ENLARGED CLASSROOMS



TYPICAL EXISTING CLASSROOM



TYPICAL NEW CLASSROOM

# NEW PERFORMING ARTS FACILITY



- ✓ Seating for 384 students/parents
- ✓ Increases gathering areas for meetings, events & community
- ✓ Air conditioning, Audio Visual system, etc.
- ✓ Music Room with practice rooms

# NEW GYMNASIUM

- New Gymnasium
  - ✓ New Locker Room
  - ✓ New Fitness Area
  - ✓ New Indoor Basketball Court



# NEW LIBRARY/MEDIA CENTER

- Reimagined for 21<sup>st</sup> century learning
  - ✓ Laptop charging stations
  - ✓ Encourages exploration, creation and collaboration between students, teachers and community
  - ✓ Technology



# NEW WELLNESS CENTER

- New Wellness Center
  - ✓ Access Community Resources
  - ✓ Counseling Services
  - ✓ Empowerment / Educational Workshops





# OUTDOOR LEARNING QUAD



- ✓ Outdoor learning classrooms/reading garden
- ✓ Shaded seating
- ✓ Trees and grassy areas

# NEW ALL-WEATHER FIELD

- Synthetic turf field for increased playability and safety
  - ✓ Located on rooftop of parking structure



# INTERIM HOUSING/BUSING

---

## **Doug Jordan**

Measure E Liaison  
Long Beach Unified School District

## **Jason Perdew / Kezia Bailey**

Transportation Supervisor  
Long Beach Unified School District



# INTERIM HOUSING

- Students and teachers will be relocated to the Butler campus while Washington MS is under construction
  - Interim housing: 2024-25 through 2027-28 school year
  - Washington reopens: 2027-28 school year



## BUS STOPS

AM PICKUP	PM DROPOFF	STOP LOCATION
8:23 AM	4:12 PM	ATLANTIC AV / 7TH ST (NEC)
8:27 AM	4:17 PM	ATLANTIC AV / 10TH ST (NEC)
8:35 AM	4:22 PM	ATLANTIC AV / ANAHEIM ST (NEC)
8:23 AM	4:17 PM	LONG BEACH BLVD / 10TH ST (NEC)
8:30 AM	4:25 PM	LONG BEACH BLVD / PCH (NEC)
8:30 AM	4:05 PM	10TH ST / CHERRY AVE
8:35 AM	4:10 PM	10TH ST / ORANGE AVE



## Student Bus Pass

Name: Jason Perdew

School: Washington/Butler

**AM Bus Info:**                      **Route Number 815**

Location: ANAHEIM ST. / TEMPLE AV. (NW Corner)

**PM Bus Info:**                      **Route Number 815**

Location: ANAHEIM ST. / TEMPLE AV. (NW Corner)

**No Pass, No Ride.**



# LONG BEACH

UNIFIED SCHOOL DISTRICT

TRANSPORTATION BRANCH

## BUS STOPS

AM PICKUP	PM DROPOFF	STOP LOCATION
8:20 AM	4:00 PM	MAGNOLIA AVE/ANAHEIM ST (NEC)
8:25 AM	4:05 PM	MAGNOLIA AVE/17TH ST (NEC)
8:30 AM	4:10 PM	MAGNOLIA AVE/PCH (NEC)
8:15 AM	4:00 PM	BIRNEY ES (GOLDEN AVE)
8:22 AM	3:52 PM	ROBINSON MS (28TH ST)
8:30 AM	3:45 PM	LAFAYETTE ES (EUCALYPTUS AVE)
8:35 AM	3:50 PM	ROOSEVELT ES (ATLANTIC AVE)

## Student Bus Pass

Name: Jason Perdew

School: Washington/Butler

**AM Bus Info:** Route Number 815

Location: ANAHEIM ST. / TEMPLE AV. (NW Corner)

**PM Bus Info:** Route Number 815

Location: ANAHEIM ST. / TEMPLE AV. (NW Corner)


**No Pass, No Ride.**

## **BUS CODE OF CONDUCT**

- 1. PASSENGERS MUST COOPERATE WITH DRIVER.**
- 2. PASSENGERS MUST REMAIN SEATED.**
- 3. PASSENGERS MUST KEEP HANDS, ARMS, AND HEAD INSIDE THE BUS.**
- 4. PASSENGERS MUST NOT EAT, DRINK (EXCEPT CLEAR LIQUIDS), AND/OR SMOKE ON BUS.**
- 5. PASSENGERS MUST REMAIN COURTEOUS, USE NO PROFANE LANGUAGE.**
- 6. PASSENGERS MUST KEEP VOICES LOW.**
- 7. NO BOISTEROUS CONDUCT.**
- 8. NO ATHLETIC CLEATS OR SPIKES (NO EXCEPTIONS).**
- 9. PASSENGERS MUST KEEP BUS CLEAN.**

# BUS ROUTE SIGN UP





**LONG BEACH**  
UNIFIED SCHOOL DISTRICT  
TRANSPORTATION BRANCH

### 24-25 Washington to Butler - Bus Route Signup

Washington Middle School to Butler Middle School - Bus Route Signup

pgarcia2@lbschools.net [Switch account](#)

\* Indicates required question

**Email \***

Your email

**Student Name \***

Your answer

**Student Grade \***

Choose



# RIDE THE ROUTE – SAVE THE DATES

August 1, 2024

or

August 8, 2024

Location:

Washington Middle School

Time:

TBD



# THANK YOU

---

**Contact:**

[LBSchoolBonds.net](http://LBSchoolBonds.net)

[schoolbonds@lbschools.net](mailto:schoolbonds@lbschools.net)

(562) 997-7550

